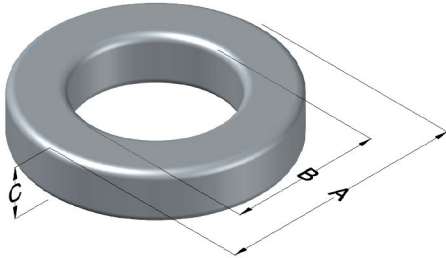




**0077120A7**

110 Delta Drive  
 Pittsburgh, PA 15238  
 NAFTA Sales: (1)800-245-3984  
 HK Sales : (852)3102-9337  
 magnetics@spang.com  
 www.mag-inc.com



Kool M $\mu$ Permeability ( $\mu$ )	A <sub>L</sub> (nH/T <sup>2</sup> )	Core Marking			Coating Color
		Lot Number	Part Number	Inductance Grade	
125	72 ± 8%	XXXXXX	77120A7	N/A	Black

Dimensions	Uncoated		Coated Limits			Packaging
	(mm)	(in)	(mm)	(in)		
OD (A)	16.6	0.653	17.3	0.680	max	Bulk Pack 4 bags/box Box Qty= 2000 pcs
ID (B)	10.2	0.400	9.52	0.375	min	
HT (C)	6.35	0.250	7.12	0.280	max	

Electrical Characteristics			Physical Characteristics						
Watt Loss @ 100 kHz, 100mT max(mW/cm <sup>3</sup> )	DC Bias min (A·T/cm)		Voltage Breakdown wire to wire min (V <sub>AC</sub> )	Break Strength min (kg)	Window Area W <sub>A</sub> (mm <sup>2</sup> )	Cross Section A <sub>e</sub> (mm <sup>2</sup> )	Path Length L <sub>e</sub> (mm)	Volume V <sub>e</sub> (mm <sup>3</sup> )	Weight (g)
	80%	50%							
1400	10.7	27.8	1000	14	71.2	19.2	41.2	791	5.0

Winding Information					Temperature Rating	
Winding Length Per Turn				Wound Coil Dimensions (mm)		Curie Temp: 500°C
Winding Factor	(mm)	Winding Factor	(mm)	Maximum OD (70%)	23.7	Coating Temp (Continuous up to): 200°C
				Maximum HT (70%)	15.2	
0%	22.1	40%	27.0	Surface Area (mm <sup>2</sup> )		Notes:
20%	24.6	45%	27.7	Unwound Core		
25%	25.2	50%	28.4	40% Winding Factor		
30%	25.6	60%	29.8			
35%	26.4	70%	31.5			

