



No.1465D

LC7570, 7570E

Static Drivers for Vacuum Fluorescent Display for Frequency Display Applications

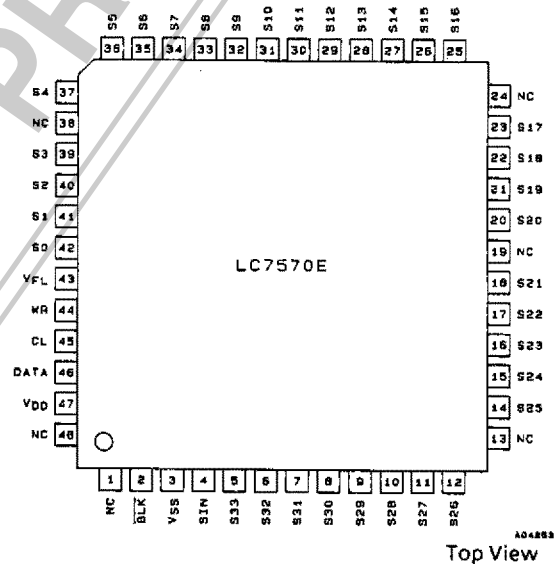
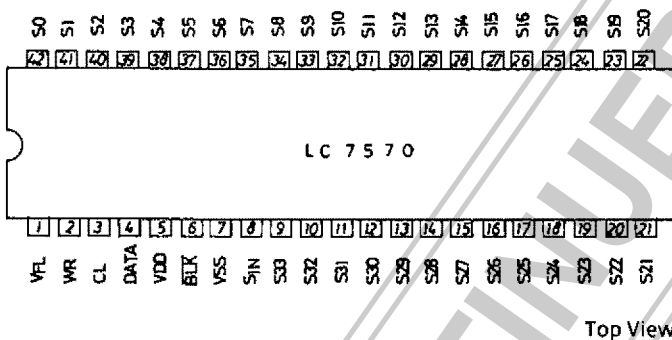
Overview

The LC7570, LC7570E are controller-controlled static drivers for vacuum fluorescent display to be used in electronic tuning frequency indicator applications.

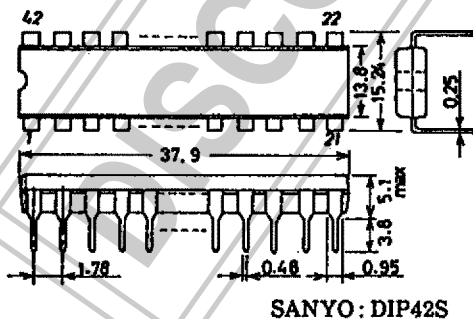
Features

- 34-segment output (With pull-down resistor).
- 5-step A/D converter.
- The display can be forced to the off state with the $\overline{\text{BLK}}$ pin.
- Data input : Serial input (CL, DATA, WR).
- The program of a controller can be used to suit the segment outputs to the pin assignment of a vacuum fluorescent display.

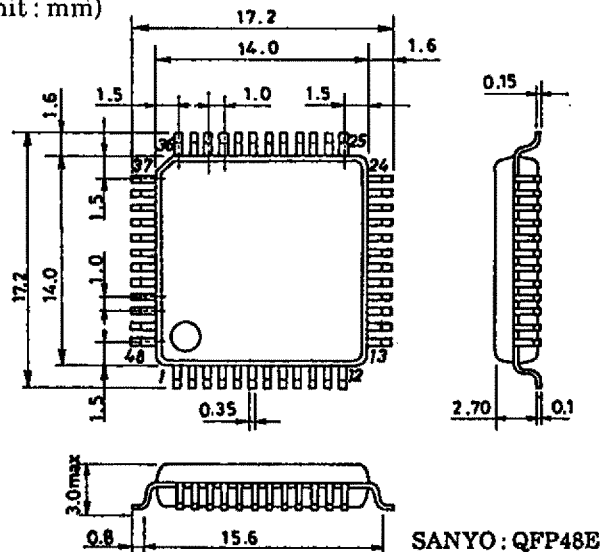
Pin Assignments



Package Dimensions 3025B [LC7570] (unit : mm)



Package Dimensions 3156 [LC7570E] (unit : mm)



LC7570,7570E

Absolute Maximum Ratings at $T_a = 25^\circ\text{C}, V_{SS} = 0\text{V}$

Parameter	Symbol	Conditions	Value	Unit	
Maximum Supply Voltage	$V_{DD \text{ max}}$	V_{DD}	-0.3 to +9.0	V	
Maximum Input Voltage	$V_{IN \text{ max}}$	CL, DATA, WR, SIN, $\overline{\text{BLK}}$	-0.3 to $V_{DD} + 0.3$	V	
Maximum Output Voltage	$V_{OUT \text{ max}}$	S0 to S33, V_{FL}	$V_{DD} - 28$ to $V_{DD} + 0.3$	V	
Maximum Output Current	$I_{OUT \text{ max}}$	S0 to S33	3.0	mA	
Allowable Power Dissipation	$P_d \text{ max}$	$T_a = 75^\circ\text{C}$	LC7570	500	mW
			LC7570E	480	mW
Operating Temperature	T_{opr}		-30 to +75	$^\circ\text{C}$	
Storage Temperature	T_{stg}		-40 to +125	$^\circ\text{C}$	

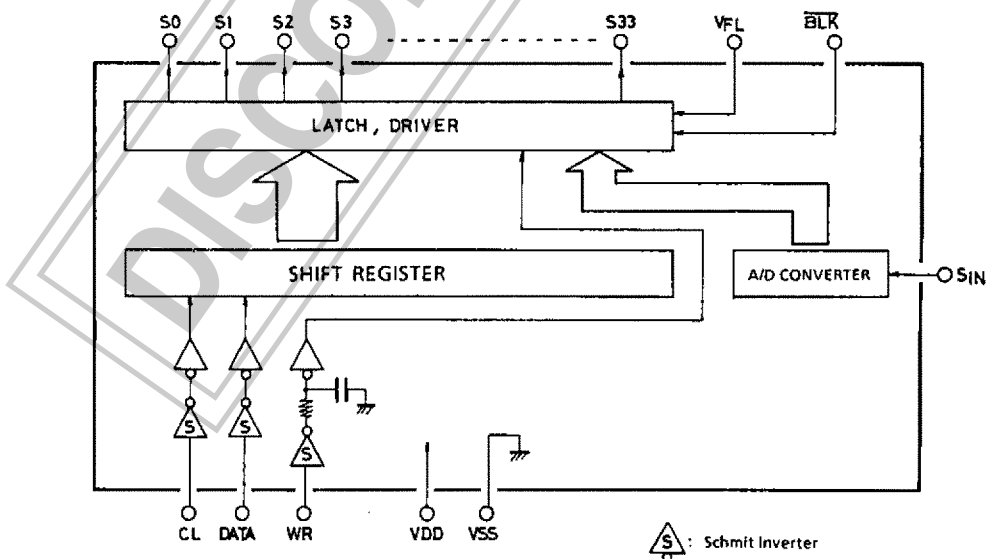
Allowable Operating Ranges at $T_a = -30$ to $+75^\circ\text{C}, V_{SS} = 0\text{V}$

Parameter	Symbol	Conditions	min	typ	max	unit
Supply Voltage	V_{DD}	V_{DD}	4.5		8.0	V
Input High Level Voltage	V_{IH}	$\overline{\text{BLK}}$	$0.7V_{DD}$		V_{DD}	V
Input Low Level Voltage	V_{IL}	$\overline{\text{BLK}}$	0	$0.3V_{DD}$		V
Rise Trigger Threshold Voltage	V_P	CL, DATA, WR	$0.8V_{DD}$		V_{DD}	V
Fall Trigger Threshold Voltage	V_N	CL, DATA, WR	0	$0.2V_{DD}$		V
Output Voltage	V_{OUT}	S0 to S33, V_{FL}	$V_{DD} - 28$		V_{DD}	V
Write Pulse Width	P_w	WR	20			μs

Electrical Characteristics in the Allowable Operating Ranges

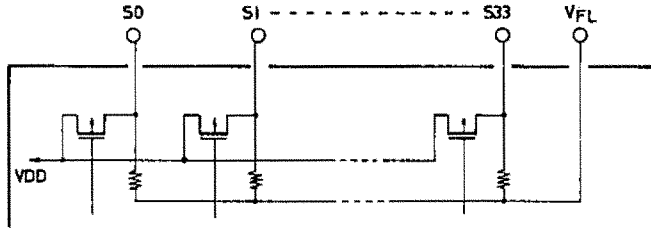
Parameter	Symbol	Conditions	min	typ	max	unit
Hysteresis Width	V_H	CL, DATA, WR	$0.15V_{DD}$	$0.6V_{DD}$		V
Input High Level Current	I_{IH}	CL, DATA, WR, SIN, $\overline{\text{BLK}}$: $V_I = 8\text{V}$			5.0	μA
Input Low Level Current	I_{IL}	CL, DATA, WR, SIN, $\overline{\text{BLK}}$: $V_I = 0\text{V}$	-5.0			μA
Output High Level Voltage	V_{OH}	S0 to S33 : $I_O = 2.5\text{mA}$	$V_{DD} - 2.8$			V
Output OFF-State Voltage	V_{OFF}	S0 to S33 : $V_{FL} = V_{DD} - 25\text{V}$, output OFF		$V_{DD} - 24$		V
Self-Contained Resistance in Output	r_o	S0 to S33 : $V_{DD} = 5\text{V}$, $V_{FL} = -20\text{V}$	70	170	400	$\text{k}\Omega$
A/D Converter						
1st Step Light-Up Voltage	AD1	SIN	$0.1V_{DD}$			V
2nd Step Light-Up Voltage	AD2	SIN	$0.2V_{DD}$			V
3rd Step Light-Up Voltage	AD3	SIN	$0.3V_{DD}$			V
4th Step Light-Up Voltage	AD4	SIN	$0.4V_{DD}$			V
5th Step Light-Up Voltage	AD5	SIN	$0.5V_{DD}$			V
Supply Current	I_{DD}	V_{DD} : input = 0V, output = open			3.0	mA

Equivalent Circuit Block Diagram



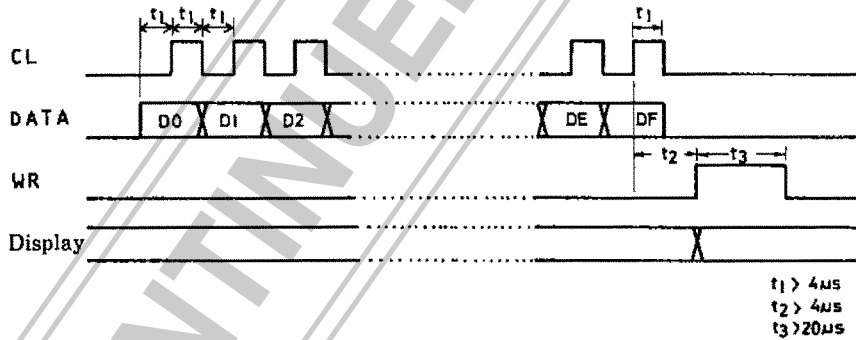
Pin Description

S0 to S33, V_{FL} : Segment outputs and common pin for pull-down resistors.

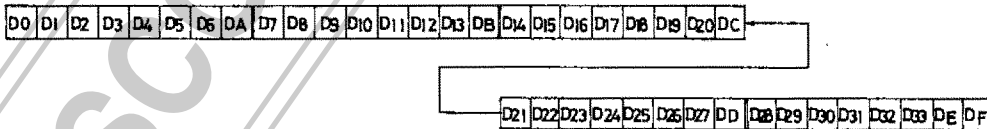


- $\overline{\text{BLK}}$: Input for making display unlighted
 $\overline{\text{BLK}} = \text{「 0 」} (V_{SS})$ Unlighted
 $\overline{\text{BLK}} = \text{「 1 」} (V_{DD})$ Lighted
- CL, DATA, WR : Data input
- V_{DD}, V_{SS} : Power supply pin
- SIN : A/D converter input
 - 1st step light-up level $0.1V_{DD}$ (typ)
 - 2nd step light-up level $0.2V_{DD}$ (typ)
 - 3rd step light-up level $0.3V_{DD}$ (typ)
 - 4th step light-up level $0.4V_{DD}$ (typ)
 - 5th step light-up level $0.5V_{DD}$ (typ)
- NC : No connect

Data Input



Inputting starts at D0.



- D0 to D33 : Display data
- DA to DE : Dummy bit (don't care)
- DF : S29 to S33 select
- Dn = 「 1 」 : Sn = 「 1 」 (= V_{DD})
- Dn = 「 0 」 : Sn = 「 0 」 (= V_{FL})
- DF = 「 0 」 : D29 to D33 → S29 to S33
- DF = 「 1 」 :
 - AD1 → S33
 - AD2 → S32
 - AD3 → S31
 - AD4 → S30
 - AD5 → S29

CONTINUED PRODUCT

- No products described or contained herein are intended for use in surgical implants, life-support systems, aerospace equipment, nuclear power control systems, vehicles, disaster/crime-prevention equipment and the like, the failure of which may directly or indirectly cause injury, death or property loss.
- Anyone purchasing any products described or contained herein for an above-mentioned use shall:
 - ① Accept full responsibility and indemnify and defend SANYO ELECTRIC CO., LTD., its affiliates, subsidiaries and distributors and all their officers and employees, jointly and severally, against any and all claims and litigation and all damages, cost and expenses associated with such use:
 - ② Not impose any responsibility for any fault or negligence which may be cited in any such claim or litigation on SANYO ELECTRIC CO., LTD., its affiliates, subsidiaries and distributors or any of their officers and employees jointly or severally.
- Information (including circuit diagrams and circuit parameters) herein is for example only; it is not guaranteed for volume production. SANYO believes information herein is accurate and reliable, but no guarantees are made or implied regarding its use or any infringements of intellectual property rights or other rights of third parties.

This catalog provides information as of June, 1995. Specifications and information herein are subject to change without notice.